

FRAISE TORIQUE
TORISCHE FRÄSER
TORIC ENDMILL

21372-12-R1.5

Version du
12.06.2020



Compatibilité outil / matière
Werkzeug / Werkstoffverträglichkeit
Tool / Material compatibility

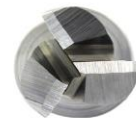


↑
ESHOP / EZI CUT

- 1/3
- 2/3
- 3/3

E2
Groupe Vc [m/min]

		Groupe	Vc [m/min]	
ACIERS ALLIÉS ET NON ALLIÉS UNLEGIERTE STÄHLE NON-ALLOYED STEELS	Rm < 450 N/mm ²	1a	140	●
	Rm 450 - 700 N/mm ²	1b		
	Rm 700 - 900 N/mm ²	1c		
	Rm < 1200 N/mm ²	1d		
ACIERS INOX ROSTFREIE STÄHLE STAINLESS STEELS	Rm < 650 N/mm ²	2a		
	Rm 650 - 950 N/mm ²	2b		
	Rm > 950 N/mm ²	2c		
ACIERS TREMPÉS GEHÄRTETE STÄHLE HARDENED STEELS	44 - 56 HRC	3a		
	57 - 67 HRC	3b		
MATÉRIAUX EXOTIQUES EXOTISCHE WERKSTOFFE EXOTIC MATERIALS	< 32 HRC	4a		
	> 32 HRC	4b		
GRAPHITE		5	180	●
FONTES GUSS CAST IRON	< 32 HRC	6a		
	> 32 HRC	6b		
TITANE TITAN	Rm < 800 N/mm ²	7a	60	●
	800 < Rm N/mm ²	7b	40	●
ALLIAGES NICKEL NICKEL NICKEL ALLOYS	Rm < 1000 N/mm ²	8a		
	1000 < Rm N/mm ²	8b		
CUIVRE, LAITON, BRONZE KUPFER, MESSING, BRONZE COPPER, BRASS, BRONZE	Rm < 850 N/mm ²	9a	320	●
	850 < Rm N/mm ²	9b	200	●
ALUMINIUM	Si < 0.5%	10a	300	●
	0.5% < Si < 5%	10b	250	●
	Si > 5%	10c		
MATIÈRES SYNTHÉTIQUES KUNSTSTOFFE SYNTHETIC MATERIALS	Thermoplast	11a	170	●
	Duraplast	11b	120	●
MATIÈRES COMPOSITES FASERVERST. MATERIALEN COMPOSITE MATERIALS	Fibre de verre	12a	130	●
	Fibre de carbone	12b	90	●
MÉTAUX PRÉCIEUX EDELMETALLE PRECIOUS MATERIALS	Or • Gold	13a	320	●
	Platine	13b		



D (h10)	12
d (h6)	12
L	83
l1	26
l3	
d3	
R	1.5
e	
Z	3
Chanfrein	
K	
w° collision	