

FRAISE TORIQUE
TORISCHE FRÄSER
TORIC ENDMILL

21372D-10-R1

Version du
12.06.2020



Compatibilité outil / matière
Werkzeug / Werkstoffverträglichkeit
Tool / Material compatibility



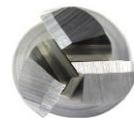
↑
ESHOP / EZI CUT

- 1/3
- 2/3
- 3/3

EZI - DIAM

Gruppe Vc [m/min]

ACIERS ALLIÉS ET NON ALLIÉS UNLEGIERTE STÄHLE NON-ALLOYED STEELS	Rm < 450 N/mm ²	1a	
	Rm 450 - 700 N/mm ²	1b	
	Rm 700 - 900 N/mm ²	1c	
	Rm < 1200 N/mm ²	1d	
ACIERS INOX ROSTFREIE STÄHLE STAINLESS STEELS	Rm < 650 N/mm ²	2a	
	Rm 650 - 950 N/mm ²	2b	
	Rm > 950 N/mm ²	2c	
ACIERS TREMPÉS GEHÄRTETE STÄHLE HARDENED STEELS	44 - 56 HRC	3a	
	57 - 67 HRC	3b	
MATÉRIAUX EXOTIQUES EXOTISCHE WERKSTOFFE EXOTIC MATERIALS	< 32 HRC	4a	
	> 32 HRC	4b	
GRAPHITE		5	180 ●
FONTES GUSS CAST IRON	< 32 HRC	6a	
	> 32 HRC	6b	
TITANE TITAN	Rm < 800 N/mm ²	7a	
	800 < Rm N/mm ²	7b	
ALLIAGES NICKEL NICKEL NICKEL ALLOYS	Rm < 1000 N/mm ²	8a	
	1000 < Rm N/mm ²	8b	
CUIVRE, LAITON, BRONZE KUPFER, MESSING, BRONZE COPPER, BRASS, BRONZE	Rm < 850 N/mm ²	9a	300 ●
	850 < Rm N/mm ²	9b	250 ●
ALUMINIUM	Si < 0.5%	10a	400 ●
	0.5% < Si < 5%	10b	300 ●
	Si > 5%	10c	250 ●
MATIÈRES SYNTHÉTIQUES KUNSTSTOFFE SYNTHETIC MATERIALS	Thermoplast	11a	
	Duraplast	11b	
MATIÈRES COMPOSITES FASERVERST. MATERIALEN COMPOSITE MATERIALS	Fibre de verre	12a	260 ●
	Fibre de carbone	12b	200 ●
MÉTALX PRÉCIEUX EDELMETALLE PRECIOUS MATERIALS	Or • Gold	13a	280 ●
	Platine	13b	40 ●



D (h10)	10
d (h6)	10
L	72
l1	22
l3	
d3	
R	1
e	
Z	3
Chanfrein	
K	
w° collision	